



# VIDYA ICS

*We Nurture Dreams...*



# DAILY NEWS ANALYSIS

ENGLISH VERSION



**OCT.  
2024**

 **CONTACT US**

942-574-4877

[www.vidyaics.com](http://www.vidyaics.com)

[icsvidya@gmail.com](mailto:icsvidya@gmail.com)





# VIDYA ICS

*We Nurture Dreams...*

**DAILY NEWS ANALYSIS**

**OCT-24-2024**

**PRE+MAINS SPECIAL**

## Contents

.....	0
Tadoba-Andhari Tiger Reserve: A Comprehensive Biodiversity Hub .....	2
Earthworms: The Uncelebrated Custodians of Soil Health .....	5
Kalleshwar Temple: A Window to the Past .....	7

VIDYA ICS



## Tadoba-Andhari Tiger Reserve: A Comprehensive Biodiversity Hub

### Context:

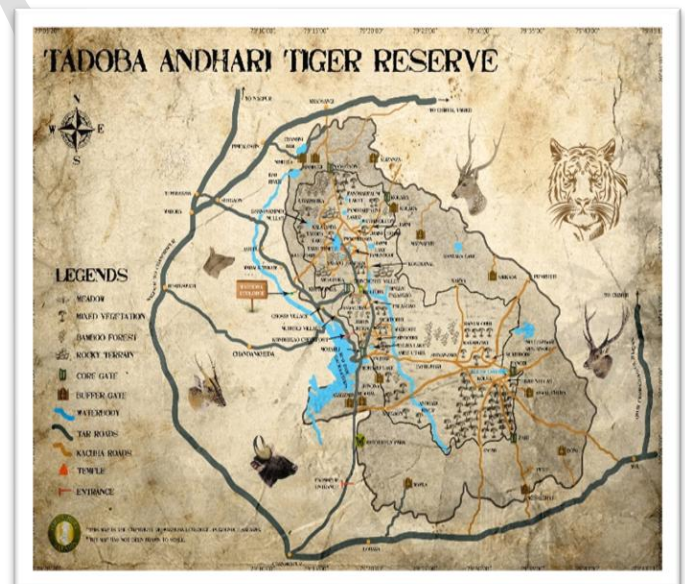
Tadoba-Andhari Tiger Reserve (TATR) is one of India's most prominent wildlife sanctuaries, particularly known for its tiger population and vibrant ecosystem. Located in Maharashtra's Chandrapur district, it is a sanctuary for a vast array of species, making it a significant site for biodiversity conservation.

### Geographical Location and Importance:

TATR is situated in the Chandrapur district of Maharashtra, within the Deccan plateau, covering an expanse of about 1,171 square kilometers. It is a part of the Central Indian Tiger Reserve (CITR), a network crucial for preserving India's tiger populations and maintaining biodiversity. With its mix of dense forests, hills, and water bodies, the reserve offers a diverse habitat for wildlife.

### Biodiversity:

- Flora:** Dominated by dry deciduous forests, Tadoba is rich in species like teak, bamboo, and crocodile bark trees. The varied vegetation supports complex ecosystems, catering to the needs of herbivores, carnivores, and other wildlife.
- Fauna:** TATR's wildlife ranges from apex predators to smaller mammals. It is home to Bengal tigers, leopards, sloth bears, wild dogs (dholes), gaur, and several species of deer, including the chital and sambar.





3. **Avian Life:** A haven for bird enthusiasts, the reserve houses over 200 bird species, including rare ones like the crested serpent eagle, Indian pitta, and grey-headed fish eagle, making it a hotspot for avifaunal diversity.

### *Tiger Conservation:*

1. **Tiger Population:** TATR is renowned for its stable tiger population. Regular censuses help monitor the health and distribution of these majestic animals, ensuring sustainable conservation efforts.
2. **Anti-Poaching:** The reserve employs strict anti-poaching regulations, supported by advanced surveillance techniques, to protect not only tigers but the entire wildlife community.
3. **Community Involvement:** Conservation efforts include engaging local communities in sustainable livelihood projects, reducing dependency on forest resources, and minimizing human-wildlife conflicts.

### *Tourism and Recreation:*

1. **Wildlife Safaris:** Visitors can explore the reserve through jeep and elephant safaris, offering them close encounters with wildlife, especially tigers.
2. **Trekking and Exploration:** Several trekking routes provide panoramic views of Tadoba's scenic landscapes, allowing visitors to immerse themselves in nature.
3. **Accommodation:** TATR provides a range of accommodations, from eco-friendly lodges to luxurious resorts, promoting eco-tourism while maintaining environmental integrity.

### *Conservation Challenges and Initiatives:*

1. **Human-Wildlife Conflicts:** Tadoba faces persistent challenges like human-animal conflicts, where wild animals often raid crops or damage property, leading to tensions with local communities.



- Habitat Fragmentation:** Deforestation, mining, and infrastructure projects have caused habitat fragmentation, threatening the reserve's ecological balance.
- Initiatives:** Efforts to combat these challenges include habitat restoration, eco-development projects, anti-poaching drives, and creating awareness among local communities to protect Tadoba's biodiversity.



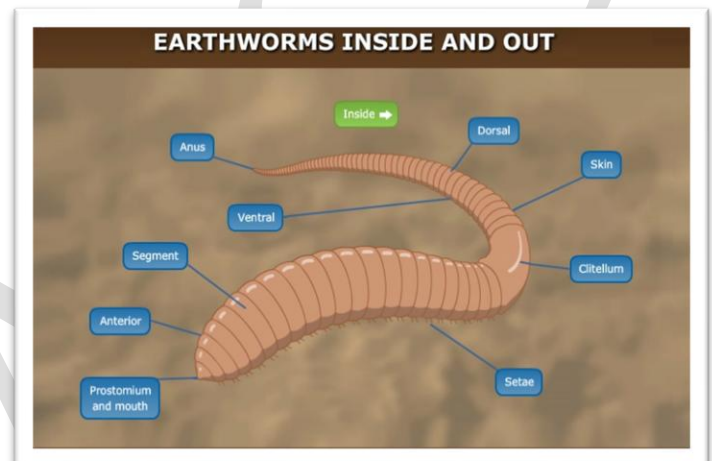
## Earthworms: The Uncelebrated Custodians of Soil Health

### Context:

Though often disregarded, earthworms play a pivotal role in enhancing soil health and supporting ecological balance. Dubbed "ecosystem engineers," these segmented invertebrates possess the remarkable ability to significantly modify their surroundings, contributing to the sustainability of ecosystems.

### Ecological Importance of Earthworms:

- Soil Aeration:** As earthworms burrow through the soil, they create channels that enhance aeration, facilitating the flow of oxygen to deeper layers, which is crucial for root and microbial activities.
- Nutrient Cycling:** By consuming decomposing organic matter, earthworms process it into nutrient-rich castings that improve soil fertility and boost plant growth.
- Soil Structure:** Their tunneling helps break up compacted soil, increasing pore spaces, which leads to improved soil structure and better plant root penetration.
- Water Retention:** Earthworm burrows aid in increasing the soil's ability to retain water, thus reducing erosion and water runoff, making them vital for water management in soils.
- Biodiversity Support:** Earthworms provide food and habitat for a variety of species, including birds, amphibians, and reptiles, thereby fostering biodiversity.





## *Types of Earthworms:*

1. **Epigeic Earthworms:** These species reside in the surface layer and primarily feed on decaying plant material.
2. **Endogeic Earthworms:** These worms burrow deeper into the soil, consuming organic matter mixed with mineral soil.
3. **Anecic Earthworms:** Known for creating vertical burrows, these species transport surface organic matter to lower soil layers, enriching the subsoil.

## *Threats to Earthworm Populations:*

1. **Habitat Loss:** Deforestation, urban expansion, and intensive agricultural practices contribute to the degradation of earthworm habitats.
2. **Chemical Pollution:** Pesticides, herbicides, and fertilizers pose significant risks to earthworm health and reduce their populations.
3. **Soil Disturbance:** Frequent tillage and the use of heavy machinery disrupt earthworm burrows, negatively affecting their survival and activity.

## *Conservation and Management Strategies:*

1. **Sustainable Agriculture:** Embracing organic farming, crop rotation, and cover cropping helps create favorable conditions for earthworm survival.
2. **Reduction in Chemical Usage:** Limiting the use of pesticides and chemical fertilizers mitigates their harmful effects on earthworm populations.
3. **Soil Conservation Practices:** Techniques like no-till farming, contour plowing, and mulching preserve soil health, ensuring the survival of earthworms.
4. **Earthworm Reintroduction:** In degraded areas, the introduction of native or beneficial earthworm species can restore soil health and productivity.



## Kalleshwar Temple: A Window to the Past

### Context:

The recent unearthing of a 13th-century stone inscription (Veeragallu) during the renovation of Kalleshwar Temple has reignited interest in this ancient religious monument. This discovery provides important insights into the region's historical, cultural, and religious past.

### Location and Importance of Kalleshwar Temple:

- **Location:** The Kalleshwar Temple is located in Karnataka's Bidar district.
- **Religious Significance:** Dedicated to Lord Shiva, one of Hinduism's principal deities, the temple is revered by devotees. Its rich historical and architectural legacy has also made it a prominent site for tourists.



### Historical Background:

- **Origin:** While the temple's precise origin is unclear, archaeological records point to its roots in the Chalukya dynasty (6th-12th centuries).
- **Later Modifications:** Significant additions and renovations were carried out during the reign of the Vijayanagara Empire (14th-17th centuries), further enhancing the temple's structure.

### Discovery of the Stone Inscription:





- **Historical Value:** The Veeragallu inscription offers significant insights into the cultural and historical landscape surrounding the temple's origin and development.
- **Contents:** Likely details include information about the temple's construction, patrons, and the religious and social practices of the time.
- **Broader Context:** This discovery sheds light on the political, economic, and social conditions prevailing in the region during the 13th century.

### Architectural Highlights:

- **Architectural Style:** The temple reflects a combination of Chalukya and Vijayanagara architectural styles.
- **Carvings:** The walls feature detailed bas-relief carvings depicting scenes from Hindu mythology and everyday life.
- **Gopuram:** The impressive gopuram, or entrance tower, stands as a hallmark of traditional South Indian temple architecture.

### Cultural and Religious Importance:

- **Pilgrimage Site:** The temple is a major pilgrimage destination for Shiva devotees.
- **Festivals:** It hosts various religious festivals annually, attracting large gatherings of worshippers.
- **Local Customs:** The temple is deeply woven into local cultural traditions, highlighting the region's rich heritage.

### Conservation Initiatives:

- **Restoration Efforts:** Ongoing restoration work seeks to preserve the temple's architectural and historical integrity.
- **Archaeological Investigations:** Continued research is unearthing more details about the temple's past.



# VIDYA ICS

 *We Nurture Dreams...*

**DAILY NEWS ANALYSIS**

**OCT-24-2024**

**PRE+MAINS SPECIAL**

- **Heritage Protection:** Active steps are being taken to conserve Kalleshwar Temple as a valuable cultural heritage site.

VIDYA ICS